



: C I B 8 5 H C B ' G 5 '
B 9 = , < 6 C I F < C C 8 '
; F 5 B H G '
D F C ; F 5 A ' & \$ & (

GRANT GUIDELINES

What's the aim of the Neighbourhood Grants?

You know what your community needs to thrive and we'd like to support you to achieve this.



When we say 'community', we mean a community group or a community of individuals brought together by a common purpose.

The Foundation SA Neighbourhood Grants offer non-profit organisations, up to \$5,000 to support acts of community connection, led by people in their own communities.



We know this grant this size won't change the world, but we also know that community change is about more than money.



A Community Foundation for
SOUTH AUSTRALIA

The projects we support will vary tremendously but we hope they'll all:

1.

Contribute to a more connected, resilient, sustainable, and inclusive community.

2.

Engage with and incorporate community voice.

3.

Create a sense of belonging by bringing people together to achieve a common goal or share experiences.

4.

Connect local people, groups, volunteers and businesses.



ELIGIBILITY CRITERIA



LOCATION

Foundation SA supports organisations and programs across all South Australian LGA's.

ORGANISATION TYPE



Recipients of grants can be:

A not-for-profit organisation with either an Incorporation Certificate and/or an ABN with a charitable purpose.

Grant applicants are ideally endorsed as a Deductible Gift Recipient 1 (DGR1) or have a confirmed auspice arrangement with an organisation that has DGR1.

Please note, you will be considered ineligible if the:

Application is submitted by an individual, sole trader, private or commercial business (as per the applicant ABN).

Application is submitted by an organisation that is not a legal entity (i.e. A registered not-for-profit), without the written consent of the governing/partnering body who holds the ABN.

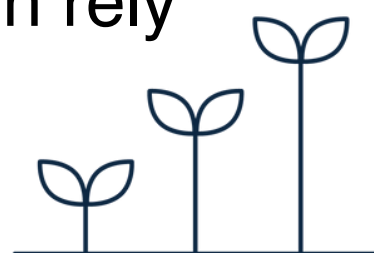


PROJECT/ACTIVITY

Project/activity must increase community connection and be informed or led by the people directly affected by the issue.

SIZE OF ORGANISATION

We will support and prioritise smaller organisations that often rely on grants and fundraising to continue their activities.

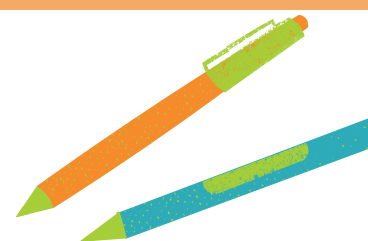


SOCIAL ENTERPRISES

Social enterprises are supported where their activities are relevant to the Neighbourhood Grants and meet the eligibility criteria.



APPLICATION



Applications are assessed on the documentation received at the time of application. We are unlikely to follow-up missing documentation after submission.

The word limits provided are a maximum but not a requirement. Please use dot points if that's easier for you.


Applications will not be accepted after the due date.

Organisations can only submit one application per grant round. However we are happy to hear from past grantees about new projects or next steps in a project we have supported.

WHAT CAN'T BE FUNDED?



- Business operational expenses (E.g laptops, software, prizes, stationary, accounting fees, salary)
- Retrospective activities/expenses
- Fundraising activities
- Illegal activities
- Projects supporting communities outside South Australia
- Applications from sporting organisations need to clearly demonstrate community outcomes that are above and beyond the sporting activities of the club



IF YOU'RE AWARDED A NEIGHBOURHOOD GRANT WHAT DO WE ASK OF YOU?

Please notify us before making any significant changes to the nature or timing of the project.
We can't wait to see the results! You will need to complete a project report at the end of 12 months. You can review the report on our website [here](#).

Allow us to publish information and images of the project being funded (E.g website, social media etc).

Acknowledge Foundation SA in all project related promotion, media and events.

We'd love to see your project in action, so please invite us to key project events and feel free to send through updates along the way.



Ready?

HOW YOUR APPLICATION WILL BE ASSESSED

Applications will be evaluated on the grant guidelines and eligibility criteria listed above.

A shortlist will be created and reviewed by a Foundation SA volunteer committee. All applicants will be notified of the outcome in November 2024 and funds will be distributed by 31 December 2024.



Important Dates

Wednesday
25 Sept

Applications Open

Wednesday
23 Oct

Applications Close

Before
31 Dec
2024

Distribution of Funds

How To Apply

Foundation SA accepts applications through our grants portal.

To set up an account and register please click [here](#).

We're here to help.

If you have any questions in relation to the grant guidelines please email:

grants@foundationsa.org.au.

If you need technical assistance with the application lodgement please contact:

Gabby Lam, Grants Manager:

gabby@communityfoundation.org.au or 03 9412 0412.

Our office hours are Monday to Thursday 9am-5pm.